

# GV-2010

## NEXT GENERATION CYBERSECURITY

The GV-2010™ is the first wire-speed network computing platform that supports multiple cybersecurity solutions. The GV-2010 combines patented deep packet inspection technology with an industry standard platform to provide a highly accurate, reprogrammable extrusion prevention solution for OSI Layer 4 through 7 network data. The GV-2010 immediately offers three integrated Extrusion Prevention applications – Data Loss Prevention, Application Control and Pattern Recognition - in one extremely high-speed MicroTCA™ device. All three applications are specially designed to secure large data networks and mission critical information at multi-gigabit throughput. Whether you manage a very large enterprise or telecommunications data network, or you are responsible for securing highly sensitive information for business transactions or government agencies, the GV-2010 helps you efficiently and effectively do your job.



### Product Overview

Extensible Markup Language-based Policy Configuration based on:

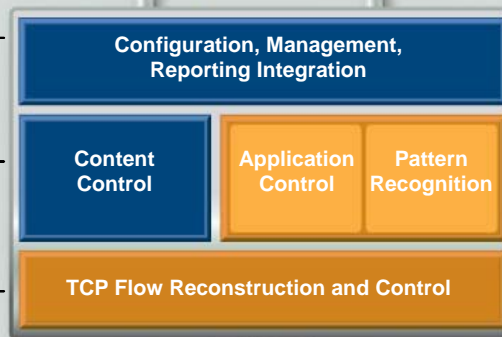
- Application identification detected
- Functional pattern detected
- Content detected
- IP address and port ranges

- Memory resident fingerprints compared to all content in flow in real-time

- Real-time TCP flow reconstruction at up to 8 Gbps
- Supports VLAN tagging
- Flow termination control

External Systems

Web User Interface



- Web-based dashboard
- Administrative tools (Web and CLI)
- Reporting
- Device Configuration

- Actions: Log, Alert, Terminate, Drop

- Control pre-built and custom applications
- Identify patterns using complex regular expressions and simple templates

- Deep Packet Inspection – layers 4-7
- Flow termination signaling

Up to 8 Gigabits per second

### KEY TECHNICAL FEATURES: *Fast, Scalable, Flexible and Extremely Accurate*

- Up to 10 Gbps hardware-based deep packet inspection, platform scalable to 40 Gbps
- Real-time content inspection and control assisted by hardware based deep packet inspection
- Extensive pattern recognition capability using extremely accurate and novel approaches
- Reprogrammable hardware supports high resilience to threat vector changes
- One hardware platform supporting many applications
- Industry-standard MicroTCA™ 3U chassis and components with high redundancy, failover and hot swappable
- Simplified integration using XML and other standard integration technologies
- Patented and patent-pending approaches that include mass data analysis and filtering in hardware

Solutions With Impact™

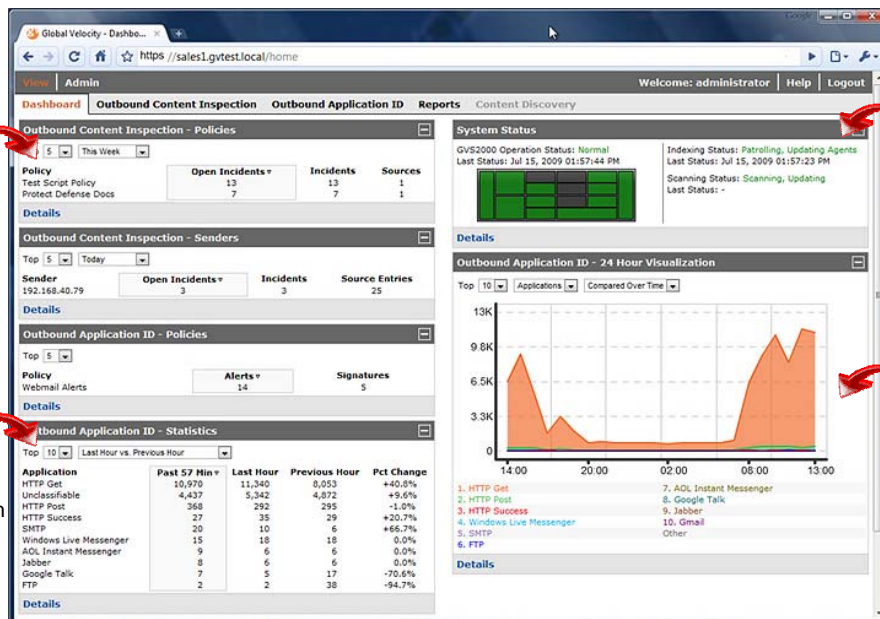


## Web 2.0 Style User Interface

- Allow List concept
- Easy to use policy configuration for both content inspection and application control
- Ability to drill down into reported incidents like content matches

### Outbound Application ID

- Any content carrying application, including Outlook, Gmail, Yahoo, P2P, FTP, and more
- Flexibility to create custom application signatures



- Real-time system status indicators for each appliance component
- Real-time reporting on Indexing agents scanning for content changes

- Real-time outbound application identification
- Flexible reporting approach with drill-down capability

## TECHNICAL SPECIFICATIONS

### System Performance

- Up to 10 Gbps aggregate throughput, scalable to 40 Gbps
- Application Firewall and Pattern Recognition up to 2 Gbps

### High Availability

- Redundant power supplies and fans
- Inline (LAN bypass) fail open or Tap mode support
- Dual hard drives

### Operating and Database Systems

- Custom Linux Kernel
- MySQL 5.0

### Network Interface

- One 10 Gbps Interface or up to four 1 Gbps Interface cards
- Ability to operate in-line or passive tap modes

### Network Management and Administration

- Real time system statistics and reporting
- Alerts and reporting
- Serial or SSH CLI
- GUI
- XML
- SYSLOG

### Power Consumption

- AC: 110V or 208/220V AC 50/60Hz
- DC: 48V or 60V
- Dual power modules

### Physical Characteristics

- Weight: 23lb 11.2 oz.
- Sized for standard 19" rack mounting
- 19w x 5.25h x 8.5d (in)

## ABOUT IMPACT TECHNOLOGIES

Impact Technologies offers solutions for today's high speed networks, enabling us to meet the needs of our enterprise, educational and healthcare clients. We partner with our clients to deliver products and services that inspect, analyze and control network traffic, not only to secure critical data, but also to reduce their network operating expense.



314.743.1400  
www.impacttech.com